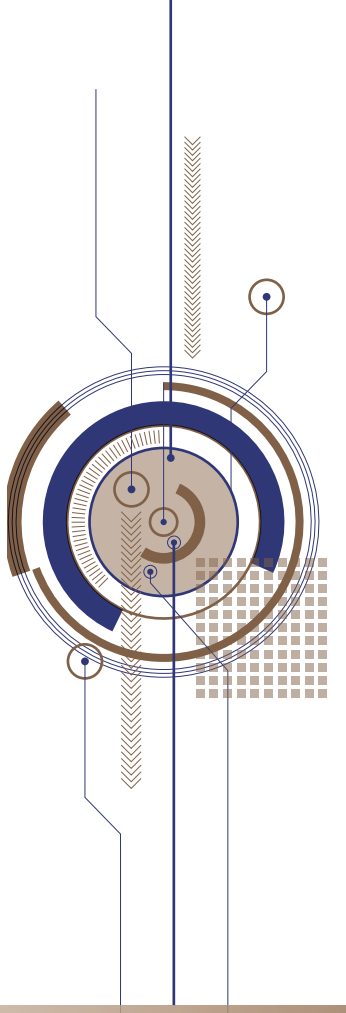


Build for Tomorrow Deliver to the Future



SINCE 1877

We've built "today" to deliver an even "better tomorrow".

The future is overflowing with creativity. We are Katolec.

We are the creators and the carriers.

Creations and delivery harmonize beyond the horizon.

This harmony is our unique value and strength.

To be better and higher, for the world and for the next stage.

We continue to support customers from their perspectives
and endeavor to be the best business partner.

Company Credo

Katolec will proactively adapt to changes of the times, continue our unwavering commitment towards building a strong partnership with its customers, and always strive to be a company trusted and loved by all.

The best solution,
integrating creations and delivery
**Supporting customers' supply chain
comprehensively**

**Combining "Logistics" and "Electronics"
to provide new business stages**

"Logistics" and "Electronics" are our core business. We create "Logitronics" integrating these two portfolios. The resulting synergy provides not only more attractive EMS* in quality, cost, and production speed but also efficient and fast logistics solutions (with high-level management precision and reliability). We continue to support customers' operational development.

* Electronics Manufacturing Service. We are entrusted with the manufacturing of electronic equipment by customer companies.

LOGISTICS
ELECTRONICS

KIPS (Katolec Innovative Production System)

KIPS, a unique system based on the NPS* method, facilitates "Rectifications" from manufacturing to logistics. These continuous improvement activities produce new value for customers as "Logitronics".

* The New Production System (NPS) is a management philosophy to improve business efficiency based on a Toyota Production System (TPS). We implement KIPS where we learn NPS to improve our business operations.



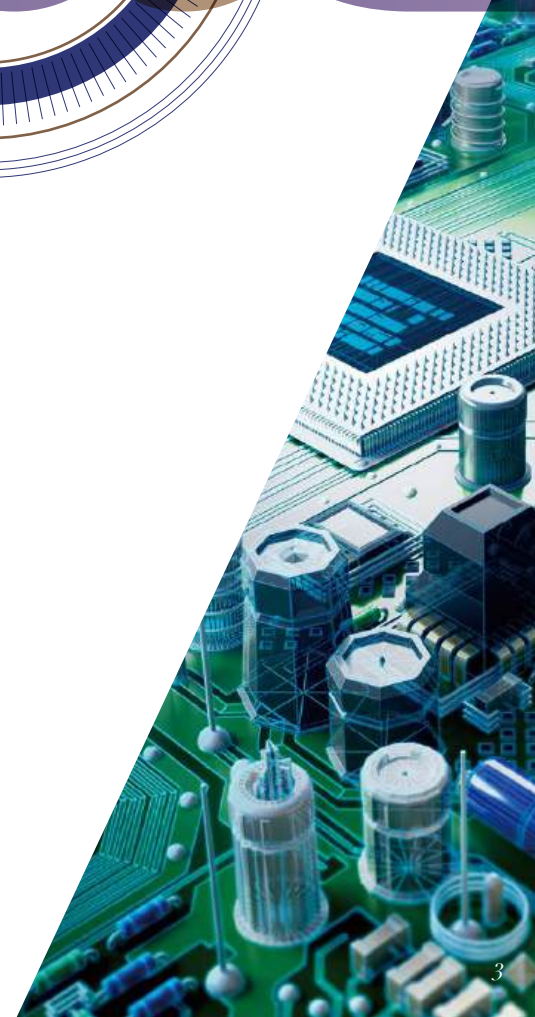
Logistics
[Transportation – Storage – Processing]

LOGISTICS
Providing more accurate
and quick services through advanced
improvement and optimization

SOLUTION



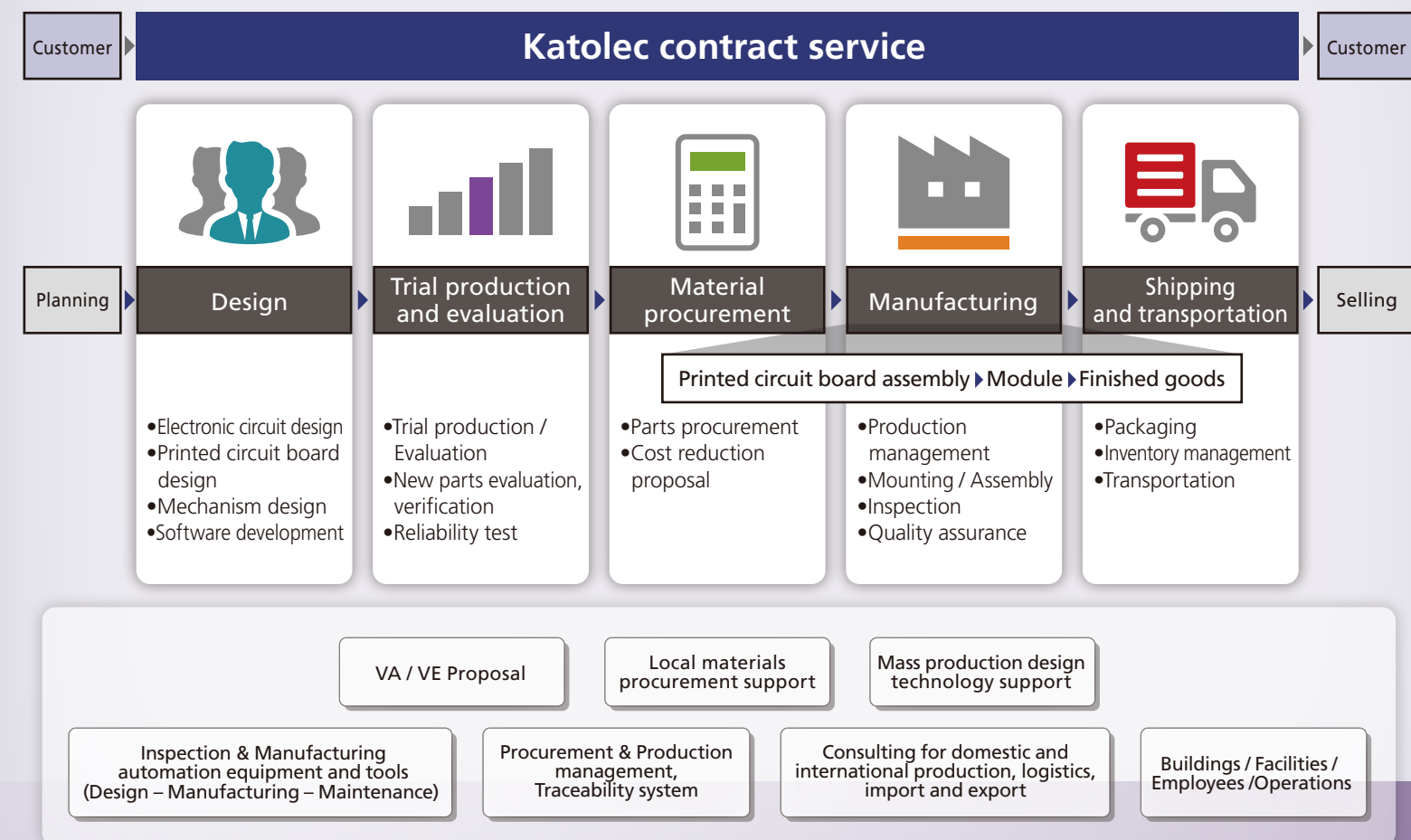
EMS
(Electronic Manufacturing Service)
[Design – Procurement – Manufacturing]
ELECTRONICS
Delivering attractive products securely
to customers nationwide and worldwide



Sponsoring customers' "Creation" with our one-stop service

ELECTRONICS

Customers can select any combination from the service menu.



EMS (Electronic Manufacturing Service) [Design – Procurement – Manufacturing] Our experience and expertise in "Manufacturing" for more than 40 years since 1980 support customers' global strategies.

Developing global EMS

Our contracted manufacturing service provides total support centered on printed circuit board assembly, from electronic equipment design to materials procurement, manufacturing of finished goods, and distribution. Based on our expertise for more than 40 years in "Manufacturing" and improvements in production processing linked up with logistics, we achieve excellent Q (quality), D (delivery), and C (cost effectiveness). Our global development of production and procurement bases reliably supports customers' overseas advancements.

From consumer electronics to automotive equipment

We provide assembly services in a wide range of fields including consumer electronic equipment for office and home, telecommunications, residential housing, energy-related and other industrial equipment, automobile front panels and tail lamps, smart keys, and other automotive equipment. We are available for services ranging from printed circuit board assembly to manufacturing of module and finished goods. In recent years, evaluating high-quality manufacturing, we are entering the aerospace field.

List of production items (printed circuit board assembly, module goods, finished goods)

Printed circuit boards assembled by Katolec are built into many different types of equipment and manufactured products.



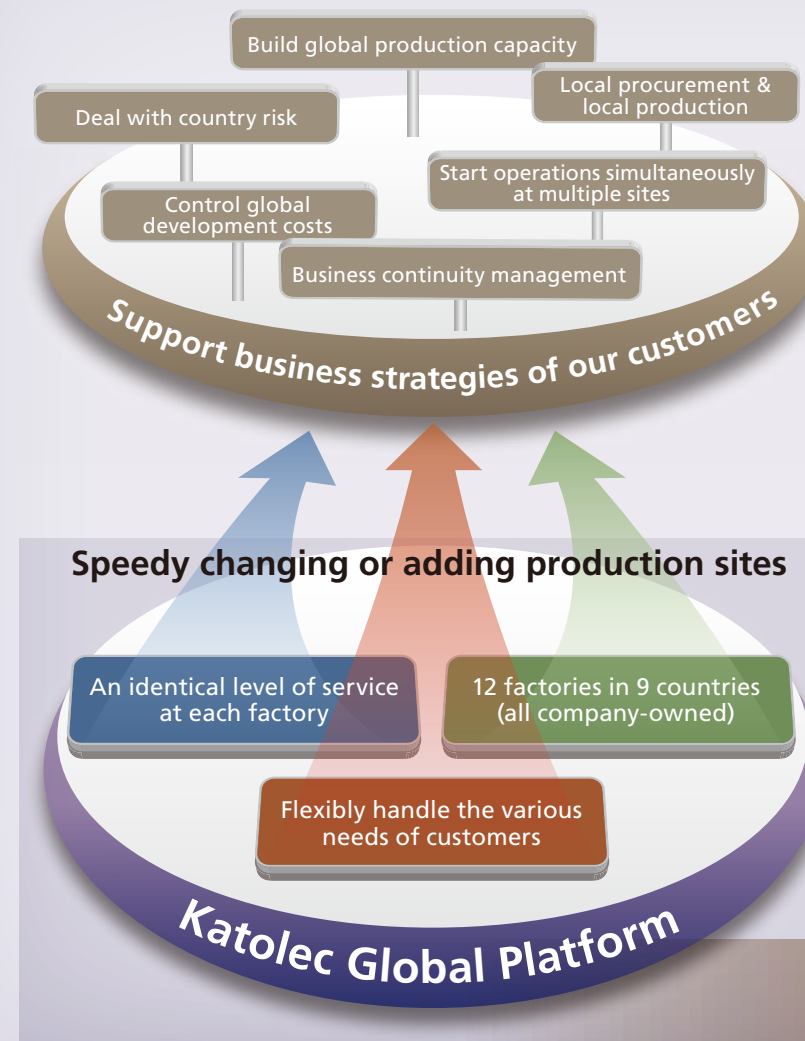
- Audiovisual equipment**
Digital cameras, TV monitors, Audio editing equipment(finished goods), others
- Home electronics**
Washing machines, Microwave ovens, Sewing machines, Electric bicycles, rice cooker, others
- Office Machines**
Printers (printed circuit board assembly/finished goods), Faxes, Copiers, others
- Housing equipment**
Air conditioners, Warm water toilet seats, Gas appliances, Household fuel cell, others
- Industrial equipment**
Amusement equipment, Vending machines, Measuring instrument, Fire alarm, Vibration sensor, others
- Medical equipment**
Dialyzers, CT scanners, X ray inspection machine, Analyzer, others
- Aerospace equipment**
Rockets



Global production bases to meet overseas development needs

ELECTRONICS

EMS (Electronic Manufacturing Service) [Design – Procurement – Manufacturing]



Optimizing procurement and production on a global platform

We provide a uniform level of high service at domestic and overseas factories in 9 countries and 12 different locations. Corresponding to changes in operation environments, we are able to smoothly handle production transfers with flexible support for country risks. In addition to local procurement functions at each factory, our global procurement bases (in Japan, Hong Kong, and Malaysia) provide back up for optimum procurement.

High-quality generated by expert engineers and cutting-edge facilities

With more than 40 years of experience in Surface Mount Technology (SMT), i.e. assembling of electronic parts (especially IC-incorporated micro parts) onto printed circuit boards and other electronic substrates, we have many expert engineers with sufficient experience since our initial stage. Additionally, our substantial cutting-edge facilities are highly appreciated by major electrical manufacturers.

[Global production and procurement bases]



Smooth delivery based on our manufacturing expertise



Logistics [Transportation – Storage – Processing] Offering solutions to optimize customers’ manufacturing and sales strategies

LOGISTICS

[Transportation and distribution bases and warehouse (JAPAN)]

Optimizing distribution operations nationwide and worldwide to enhance business efficiency

We achieve optimal and smooth logistics through improved and optimized operations based on our management accuracy accumulated in electronics business. We have 30 warehouses, more than 50 Logistics bases, and about 900 (Group total) vehicles. Enriched with various kinds of expertise in business practices such as transport and storage of chilled and frozen products, safe transport of precision instruments as well as precious works of art, we construct a distribution chain to meet customers’ needs.



Manufacturing of large pallets for machinery transportation



Order picking in warehouse transportation



TAKAMATSU Branch



OKAYAMA Branch



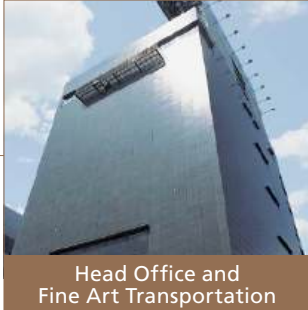
CHUBU Branch



OSAKA Branch



SENDAI Branch

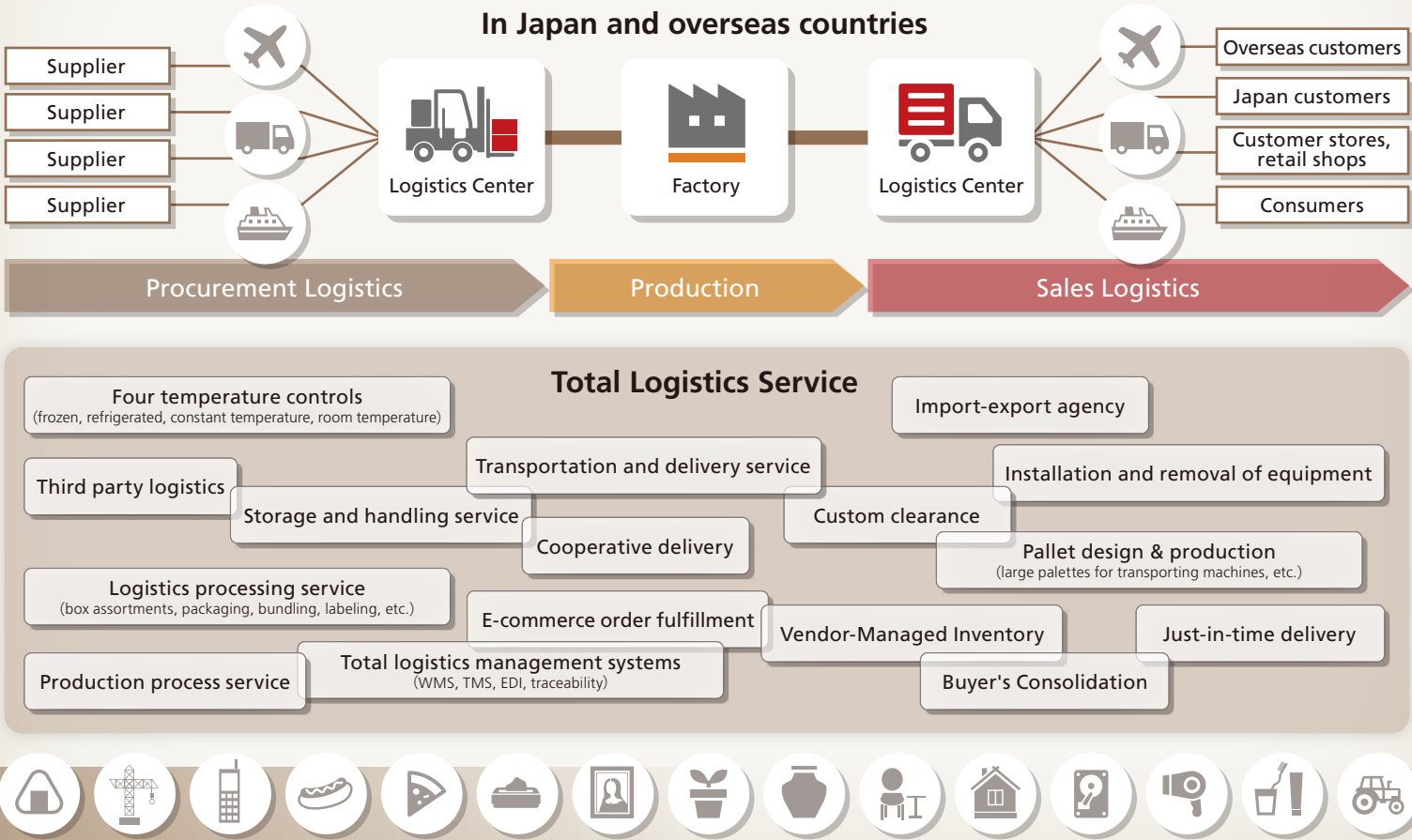


Head Office and Fine Art Transportation



● Head Office and Takamatsu Head Office ● Branch and Office (with warehouse) ● Branch and Office

Logitronics is effectively utilized in Katolec’s total logistics service. One-stop solution, from storage to transportation and distribution.



Supporting global logistics[Overseas logistics bases]

Our domestic and overseas bases cooperate with each other to provide consistent international distribution services ranging from customers’ procurement to import-export, storage, and delivery. For example, our “Buyer’s Consolidation” service collects products from multiple suppliers and packages such products together to transport to Japan or other countries. We also provide a wide range of services at overseas bases, such as labeling for distribution processing as a part of manufacturing production, and designing, manufacturing and supplying of steel pallets for large machinery.



KATOLEC GLOBAL LOGISTICS (THAILAND) CO., LTD.



KATOLEC GLOBAL LOGISTICS (VIETNAM) CO., LTD.



KATOLEC (HONG KONG) Co., LTD.

Our logistics service supports your business challenges



Logistics [Transportation – Storage – Processing]

LOGISTICS

Solving customers' business challenges with comprehensive logistics solutions [3PL operations]

We provide Third-Party Logistics (3PL) business to contract all aspects of customers' distribution operations. We handle not only efficient and assured transportation and distribution but also distribution processing, warehouse storage, door-to-door delivery, custom clearance, and system development. This operational diversity provides optimal business support for customers.

Supporting customers' distribution strategies with our unique expertise including joint delivery solutions

We examine all aspects of customer's production and sales activities and design the most efficient distribution route to provide solution strategies for optimizing product flow. For example, our joint delivery solutions to transport products collected from multiple customers can facilitate transportation cost reduction, and have been appreciated by our customers especially in food products and cosmetics business.

Integrated warehouse and transportation management system [Comprehensive Logistics Management System]

We operate integrated data control system from storage to transportation and distribution to billing, and achieve automatic truck deployment control and precise inventory inquiry based on real-time data management. The system can offer transport tracking information 24-hours a day as well. Additionally, it enables us to eliminate unnecessary tasks of drivers and warehouse operators and improve their work quality.



Fine Art Transportation

Reliable performance and special skill [Fine art transportation and storage]

With more than 40 years of experience, we provide integrated fine art transportation services from transportation to arrangement of exhibits. Transportation and storage of fine arts have to meet the special requirements which vary depending on the shape, material, age of production, state of preservation, etc. Our "Certified specialists in packaging and transportation of fine arts*" select the most suitable method for each fine art, and pack or unpack and fix it in our special truck uniquely developed for fine art transportation.

* In order to maintain and improve packing and transportation techniques for fine arts, the Japanese Association of Museums performs tests and conducts authorizations.

Uniquely developed special trucks [Trucks dedicated to fine arts transportation]

We have trucks dedicated to fine art transportation that is equipped with air suspensions and temperature and humidity controller. These trucks have been developed in collaboration with Automotive Precision Services Co., Ltd. a member company of our corporate group, and our Fine Art Transportation Branch. Their equipment continues to evolve.

A safe and comfortable hotel for precious fine arts [Warehouse dedicated to fine arts]

We have a special warehouse dedicated to fine arts in KATOLEC's Head Office in the Tokyo bay area. The well-equipped environment includes an air-conditioning system which provides optimal temperature and humidity for each individual component of the building, a photo studio space convenient for production of catalogs, and a perfect security system. Since this warehouse is designated as a bonded area, the condition of fine arts can be confirmed within the warehouse without tariffs. There is another warehouse for fine arts in Osaka, where our transportation and set-up staff are stationed.

One-stop supporting for traveling exhibitions [International transportation network]

Through the International Convention of Exhibition and Fine Art Transporters (ICEFAT) network, we move in fine arts from overseas countries and deliver them to each exhibition site in Japan, while repeating the process cycle, i.e. storage, transportation, arrangement, and removal, and return them back to the overseas countries.

Affiliated with ICEFAT, the international system of fine art transportation

Established in 1977, this international organization includes Over 70 companies in 37 different countries around the world and aims to improve the levels of fine arts transportation standards.



★As of Apr 2023

Appreciation for the regions, Respect for the environment

As one of our CSR activities and as repaying to our “Birthplace”, we promote conservation of traditional life style and culture in our modern life through the old Japanese style houses and the historic remains, which we collected from various locations in Shikoku Island and reconstructed in Takamatsu city, Shikoku, where our company was founded.

Shikoku Museum of Folk Houses



Gallery of fine arts from around the world

“Shikoku-Mura Gallery” is an exhibition of fine art from artists such as Picasso and Renoir presenting an opportunity to experience a wide range of precious art.



Treasury of multiple award-winning cultural assets

Many of the 31 buildings and approximately 20,000 ancient Japanese folk tools have received the official cultural asset designation. We have received many awards including the Mécénat Award in 1994.



CULTURE/CSR

To fulfill our responsibility as upstanding corporate citizens in the 3 areas of “Individuals, Society, and Environment”, we promote companywide activities to reduce environmental loads.

Obtained a variety of certifications for “Green Management”

We have obtained environmental management international standard ISO14001 at each base, as well as “Green Management” certifications.



Promoting traffic safety

We promote safety improvements and compliance with laws. Each base is certified with the “G Mark” by the Japan Trucking Association.



For reducing CO₂ emissions

We reevaluate each distribution process, introduce low fuel consumption vehicles, acquire energy-efficient driving techniques, and recycle packaging materials.



Obtained international standard for product quality management

We have obtained product quality management international standard ISO9001,ISO14001 and IATF16949 at each base.

Environment-friendly “Manufacturing” and distribution

Our factories and warehouses are equipped with solar energy panels. We use recyclable energy and continue to develop environment-friendly bases.



For reducing environmental load in every process

By “rectifying” business operations in each process, we promote energy efficiency and resource conservation. We respond to global environmental regulations as well.

■ Company Profile

Company name	Katolec Corporation
Founded	November 2, 1961
Established	April 1, 1967
President	Eisuke Kato
Business Operations	logistics (transportation, warehousing, logistics processing) Electronics (electric appliance manufacturing and processing)
Capital	76 million yen
Employees	Group total 8,330 (as of March 31, 2023) Katolec Corporation 2,290 Domestic subsidiaries 520 Overseas subsidiaries 5,520
Average age of employees	43.3 (as of April 1, 2023)
Number of vehicles	900 (Group total)
Bank	Mizuho Bank, Ltd., The Hyakujushi Bank, Ltd., Sumitomo Mitsui Banking Corporation, Katolec West Corporation
Subsidiaries	Automotive Precision Services Co., Ltd. COSMO Engineering Co., Ltd. Brainmen Partners Shikoku Co., Ltd. Shichifuku Shoji Co., Ltd. Ohnishi Butsuryu Co., Ltd. Ultimate Technologies Inc. P.T. KATOLEC INDONESIA KATOLEC PHILIPPINES CORPORATION KATOLEC (THAILAND) Co., Ltd. KATOLEC GLOBAL LOGISTICS (THAILAND) CO., LTD. KATOLEC (HK) Co., Ltd. KATOLEC SUZHOU Co., Ltd. KATOLEC AUTOMOTIVE SYSTEMS (GUANGZHOU) Co., Ltd. KATOLEC VIETNAM CORPORATION KATOLEC GLOBAL LOGISTICS VIETNAM Co., Ltd. KATOLEC MALAYSIA SDN.BHD. KATOLEC DEVELOPMENT INC. KATOLEC DE BAJA CALIFORNIA, S.A. DE C.V. KATOLEC DE GUANAJUATO, S.A. DE C.V. UNO MINDA KATOLEC ELECTRONICS SERVICES Pvt. Ltd. DELTA INTERNATIONAL JSC MEGATON SHIPPING PTE Ltd.
Culture	Shikoku Museum of Folk Houses

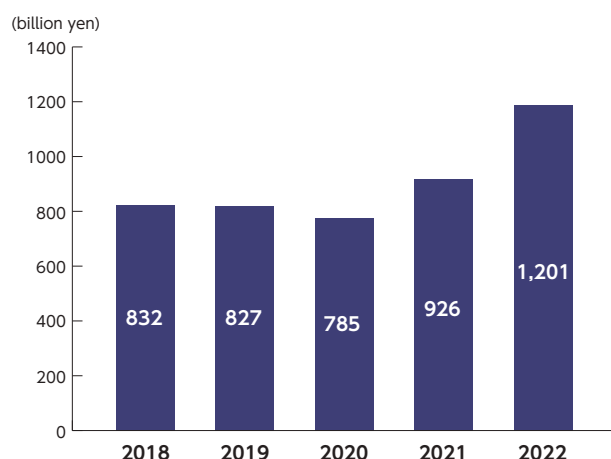
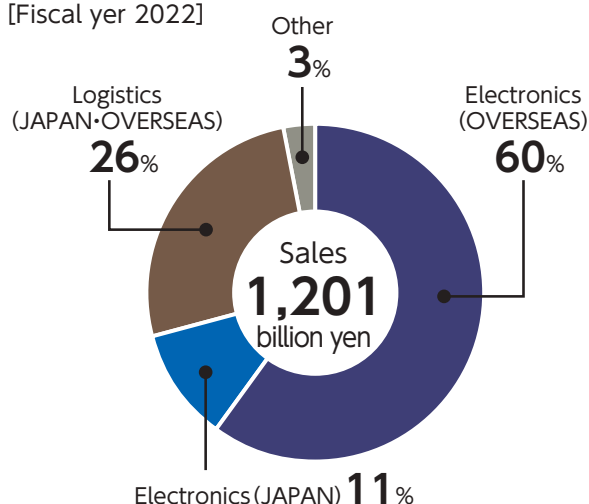
■ Main Customers

AJINOMOTO BAKERY CO.,LTD., Amazon Japan G.K., ASAHI LOGI LTD., AWASHIMADO Co.,Ltd., BRIDGESTONE LOGISTICS CO.,LTD., Canon Group, Daio Logistics Co., Ltd, Cleanup Logistics Co.,Ltd., Coca-Cola Bottlers Japan Inc., Tokai Rikuun Group, Ebara Logistics Co.,Ltd., Epson Group, FELISSIMO CORPORATION, FIRST BAKING CO.,LTD., F-LINE, FUJIFILM Group, Furukawa Electric Group, GE Group, Honda Logistics inc., House Logistics Service Corporation, ISETAN MITSUKOSHI BUSINESS SUPPORT, JTEKT CORPORATION, Kagawa Prefecture Federation of Fisheries Cooperative Associations, Kintetsu World Express, Inc., KOIZUMI LOGISTICS SERVICE CORP., KOKUBU NISHI-NIHONCORP., KOKUYO LOGITEM Co.,Ltd., Kubota Corporation, Marutomo Co.,LTD., MITSUBISHI CHEMICAL LOGISTICS CORPORATION, Mitsubishi Electric Group, MITSUBISHI HEAVY INDUSTRIES,Ltd., Mizkan Logitech Corporation, MUSEUM OF CONTEMPORARY ART TOKYO, NAGASE Group, NAGATANIEN CO.,LTD., NH Foods Group, NHK(Japan Broadcasting Corporation), Nihon Shokken Holdings Co.,Ltd., Nikon Group, Nisshin Seifun Welna, Nittsu NEC Logistics, Ltd., NX NP Logistics Co., Ltd., Okamoto Industries, Inc., Otafuku Sauce Co., Ltd., Otsuka Warehouse Co.,Ltd., Panasonic Group ,Pasco Shikishima Corporation, Pioneer Group, PIP LOGISTICS CO.,LTD, S&B Foods Inc., SAKATA SEED CORPORATION, SEZON MUSEUM OF MODERN ART, SUNTORY LOGISTICS Ltd., TableMark Co.,Ltd., Taiyokobeya Baking Co., Ltd., Takaki Bakery Co., Ltd., The Asahi Shimbun Company, The Mainichi Newspapers Co.,Ltd., The National Art Center, Tokyo, The National Museum of Modern Art, Tokyo, The National Museum of Western Art, Tokyo, The Nisshin OilliO Group, Ltd., THE YOMIURI SHIMBUN Group, TOKAI RIKI Group, TOSHIBA Group, TOTAKU INDUSTRIES, INC., TOTO Group, Toyota Tsusho Group, Unicharm Corporation, YKK AP Inc.

*Listed alphabetically, without honorifics

■ Trend in sales (Group Total)

[Fiscal year 2022]



Head Office	2-8-7, Edagawa, Koto-ku, Tokyo 135-0051, JAPAN	Tel: +81-3-5683-7000 Fax: +81-3-5683-7010
TakamatsuHead Office	5-5-1, Asahimachi, Takamatsu-shi, Kagawa 760-0065, JAPAN	Tel: +81-87-822-7000 Fax: +81-87-822-9678

■ Subsidiaries

Automotive Precision Services Co., Ltd

Head Office and Service Center	4-11-62, Asahimachi, Takamatsu-shi, Kagawa 760-0065, JAPAN	Tel: +81-87-851-0841
Toyo Service Center	1050, Imazaike, Saijo-shi, Ehime 799-1362, JAPAN	Tel: +81-898-65-4540
Tsukuba Service Center	1176-7, Minaba, Shimotsuma-shi, Ibaraki 304-0822, JAPAN	Tel: +81-296-43-7133

COSMO Engineering Co., Ltd

Head Office	285, Shinden, Irukadeshinden Komaki, Aichi, 485-0084, JAPAN	Tel: +81-568-71-6571
-------------	---	----------------------

Brainmen

Head Office	402 Shinjuku Asahi Bldg, 7-5-20, Nishishinjuku Shinjuku-ku, Tokyo 160-0023, JAPAN	Tel: +81-3-3363-2121
-------------	---	----------------------

Partners Shikoku Co.,Ltd.

Head Office	5-532-28, Asahimachi, Takamatsu-shi, Kagawa 760-0065, JAPAN	Tel:+81-87-826-2671
-------------	---	---------------------

Shichifuku Shoji Co.,Ltd.

Head Office	91 Yashima Nakamachi, Takamatsu-shi, Kagawa, 761-0112, JAPAN	Tel:+81-87-843-3112
-------------	--	---------------------

Ohnishi Butsuryu Co., Ltd

Head Office	1735-1 Toyokacho Omachi, Shikokuchuo-shi, Ehime 799-0432, JAPAN	Tel:+81-896-25-0004
-------------	---	---------------------

Ultimate Technologies Inc.

Head Office	TS Building 1F, 1-15-30 Minamichitose Nagano City, Nagano Prefecture, 380-0823, JAPAN	Tel:+81-26-267-7256
-------------	---	---------------------

DELTA INTERNATIONAL JSC

14th Floor, IDMC My Dinh2 Building, No.18 Ton That Thuyet, My Dinh, Nam Tu Liem, Hanoi, Vietnam	Tel:+84-24-3556-3356
---	----------------------

MEGATON SHIPPING PTE Ltd.

2 Leng Kee Rord, #03 11 Thye Hong Centre Singapore 159086

Shikoku Museum of Folk Houses

91, Yashimanakamachi, Takamatsu-shi, Kagawa 761-0112, JAPAN	Tel: +81-87-843-3111
---	----------------------

■ Company History

1877		Started business as a shipping transportation in Takamatsu(founder: Yataro Kato)
1928		Reorganized to a public company named as Kato Kaiun and relocated the Head Office in Kobe.
		Started a cargo-passenger ship service between Osaka and Kagawa Prefecture
1937		Changed the company name to "Kato Kaiun Co., Ltd."
1949		Separated Passenger Transport Division to become "Kato Kisen Co., Ltd."
1961		Established Kokudo Ferry CO,LTD.
	Nov.	Kato Kisen Co., Ltd. obtained a license for general motor truck transportation business between Takamatsu and Kyoto (which is a root of the current Katolec's business).
1963		Started a door-to-door delivery service for major department stores in Takamatsu Office.
1965		Opened an office in Tokyo. Received an order to transport a major electronics manufacturer in Saijo City, Ehime, and established Fukuju Unyu Co., Ltd.
		Established "Shikoku Precision Automotive Industry Co." (current Automotive Services Precision Services Co., Ltd.) and started automobile maintenance business for group companies.
1967		Separated the land transportation department from Kato Kisen Co., Ltd. to establish Kato Rikuun Co. Ltd., which became a fundamental business of the current Katolec Corporation.
1976		Tatsuo Kato became President and established "Shikoku Museum of Folk Houses" (a.k.a. Shikoku-Mura), which opened to the public in Yashima, Takamatsu City.
1980		Started an EMS (Electronic Manufacturing Service) business.
		《LOGI》Opened the Art Transportation Branch.
1982	Oct.	《EMS》Opened Matsuyama plant. (Ehime Prefecture)
1988		Awarded a prize of Architectural Institute of Japan for the Shikoku Museum of Folk Houses.
1992	Apr.	Changed the company name from Kato Rikuun Co. Ltd. to Katolec Corporation.
		Changed the company name from Fukuju Unyu Co., Ltd. to Katolec West Corporation.
1993	Sep.	Completed new Tokyo Head Office building and set up a fine art warehouse within the building.
		《EMS》Established P.T. KATOLEC INDONESIA (Bekasi, a suburb of Jakarta).
1994		Awarded a Mecenat Regional prize for the Shikoku Museum of Folk Houses.
1996	June.	《EMS》Established KATOLEC PHILIPPINES CORPORATION. (Laguna, a suburb of Manila).
	July.	《EMS》Established KATOLEC (THAILAND) Co., Ltd. (Ayutthaya).
1997	Apr.	《EMS》Opened Materials Center to reinforce the domestic procurement of components.
	June.	Inaugurated Eisuke Kato as the company president.
1999	Mar.	《EMS》Opened Takamatsu plant in Kagawa Prefecture, Japan.
		《EMS》Established KATOLEC Mexico (Mexicali); ceased operation in 2002.
2002	Mar.	《EMS》Established KATOLEC (HK) Co., Ltd. to procure components from China and other countries for overseas markets.
	July.	《EMS》Established EMS Promotion Center (Formerly Materials Center).Reinforced the design department.
	Dec.	《EMS》Started operations at the Shenzhen plant in China.
2003	July.	Relocated the Head Office to Koto-ku in Tokyo.
	Aug.	《EMS》Established KATOLEC SUZHOU Co., Ltd. (Suzhou Park, Jiangsu)

■ Company History

2005	Oct.	《EMS》 Established KATOLEC VIETNAM CORPORATION. (Suburb of Hanoi
2006	July.	《EMS》 Established KATOLEC CZECH s.r.o. (Pilsen) Ceased operation in 2012
	Aug.	《EMS》 Established KATOLEC DE BAJA CALIFORNIA, S.A. DE C.V. (Tijuana, Mexico).
2007	Apr.	《LOGI》 Opened new Fine Art Transportation business center in Osaka.
2008	June.	Joined NPS (The New Production System) as a Full Member.
2009	Sep.	《LOGI》 Opened Chubu Office.
		《LOGI》 Acquired Ichikawa Takaya Warehouse.
2011	Feb.	《LOGI》 Established KATOLEC ENGINEERING (THAILAND) Co., Ltd. (Suburb of Bangkok) (Changed the company name to KATOLEC LOGISTICS (THAILAND) Co., Ltd.)
	Apr.	《EMS》 Established KATOLEC MALAYSIA SDN.BHD. (Penan)
2012	July.	《EMS》 Established KATOLEC AUTOMOTIVE SYSTEMS (GUANGZHOU) Co., Ltd. (China)
2013	Aug.	《LOGI》 Opened the logistics division in KATOLEC (HK) Co., Ltd.
2014	Oct.	《EMS》 Established KATOLEC DE GUANAJUATO, S.A. DE C.V. (Abasolo, central Mexico).
2015	Oct.	《LOGI》 Opened Fukuoka Office.
2016	Mar.	Acquired all shares of COSMO Engineering.Co., Ltd. (FA engineering and system provider)
	Mar.	《LOGI》 Opened Sendai Office. (Current Sendai Branch)
	Oct.	《EMS》 Received order for substrates for H3 rocket
2017	Apr.	《EMS》 Established Uno Minda Katolec Electoronics Services Private Limited in India.
2018	Aug.	《LOGI》 Established KATOLEC GLOBAL LOGISTICS (THAILAND) Co., Ltd. Constructed new distribution center. (AMATACITY, CHONBURI)
	Nov.	《LOGI》 Acquired certification of AEO certified customs broker from Kobe Custom
	Dec.	《LOGI》 Established KATOLEC GLOBAL LOGISTICS VIETNAM Co.,Ltd.
2019	Apr.	Supported Setouchi Triennale 2019 as a partner. Shikoku Museum of Folks displayed art works.
	July.	《LOGI》 Completed construction of Hayashima Logistics Center in Okayama.
		《EMS》 Formed a business alliance with a Vietnamese molding manufacturer (2M)
2020	Apr.	《EMS》 Completed Construction of the forth building of P.T. KATOLEC INDONESIA.
	June.	《EMS》 Completed Construction of the second building of KATOLEC VIETNAM CORPORATION.
2021	May.	《EMS》 Completed Construction of the third building of KATOLEC PHILIPPINES CORPORATION.
2022	Apr.	Renewal of the Shikoku Museum of Folk Houses.
	Apr.	Supported Setouchi Triennale 2022 as a partner.
	Oct.	《LOGI》 Acquisition Shares of DELTA INTERNATIONAL JSC.
	Nov.	《LOGI》 Acquisition Shares of Ohnishi Butsuryu.
2023	May.	《EMS》 Acquisition Shares of Ultimate Technologies Inc.
	Nov.	《LOGI》 Established KATOLEC GLOBAL LOGISTICS (THAILAND)Co., Ltd. Constructed new distribution center. (AMATA CITY, RAYONG)
2024	Jan.	《LOGI》 Acquisition Shares of MEGATON SHIPPING PTE Ltd.

■ Katolec Group Logistics Locations (JAPAN)

Tohoku	Sendai Branch	1-3-25, Ogimachi, Miyagino-ku, Sendai-shi, Miyagi 983-0034	Tel: +81-22-706-4000
	Sendai North Office	68-1, Furukawainaba aza Konosu, Osaki-shi, Miyagi 989-6135	Tel: +81-229-88-6330
Hokuriku	Niigata Office	818-12, Nagasaki, Minamiuonuma-shi, Niigata 949-6545	Tel: +81-257-82-9946
	Toyama Office	51-1, Furumido, Kurobe-shi, Toyama 938-0021	Tel: +81-765-52-5555
Kanto	Fine Art Transportation	2-8-7, Edagawa, Koto-ku, Tokyo 135-0051	Tel: +81-3-5632-5555
	Syutoken Branch Transportation Dept.	711-1, Wakamatsucho, Wakaba-ku, Chiba-shi, Chiba 264-0021	Tel: +81-43-420-3121
	Warehouse Dept.		Tel: +81-43-424-3000
	Ichikawa Office	20-3, Oshikiri, Ichikawa, Chiba 272-0107	Tel: +81-47-356-5020
	Tsukuba Branch	801, Dai, Tsukubamirai-shi, Ibaraki 300-2401	Tel: +81-297-52-5033
	Shimodate Office	2-1-1, Midorimachi, Chikusei-shi, Ibaraki 308-0042	Tel: +81-296-22-5220
	Mitsukaido Office	5687-1, Sakatemachi, Joso-shi, Ibaraki 303-0042	Tel: +81-297-27-4551
	Tsukuba West Office	1176-7, Minaba, Shimotsuma-shi, Ibaraki 304-0822	Tel: +81-296-43-9485
	Utsunomiya Branch	5-2, Hiraidekogyodanchi, Utsunomiya-shi, Tochigi 321-0905	Tel: +81-28-661-6759
	Haga Office	157, Hagadai, Hagamachi, Haga-gun, Tochigi 321-3325	Tel: +81-28-677-2728
	Saitama Office	431, Kamegaya, Tokorozawa-shi, Saitama 359-0014	Tel: +81-4-2945-8210
Tokai	Shizuoka Office	903, Nakagawa, Shimada-shi, Shizuoka 427-0104	Tel: +81-547-38-4115
	Chubu Branch Warehouse Dept.	475-2, Fukuokacho, Kuwana-shi, Mie 511-0844	Tel: +81-594-25-9000
	Transportation Dept.		Tel: +81-594-25-9001
Kinki	Osaka Branch	1-5-34, Higashibefu, Settsu-shi, Osaka 566-0042	Tel: +81-6-6340-5555
	Fine Art Transportation Osaka Office	1-5-34, Higashibefu, Settsu-shi, Osaka 566-0042	Tel: +81-6-6827-0757
	Seishin Office	7-2-1, Takatsukadai, Nishi-ku, Kobe-shi, Hyogo 651-2271	Tel: +81-78-996-9870
	Ono Office	19, Takumidai, Ono-shi, Hyogo 675-1322	Tel: +81-794-63-8200
Chugoku	Okayama Branch	2664-1, Hayashima, Hayashima-cho, Tsukubo-gun, Okayama 701-0304	Tel: +81-86-480-1510
	Okayama East Office	294-7, Kawaguchi, Saidaiji, Higashi-ku, Okayamashi, Okayama 704-8125	Tel: +81-86-944-5160
	Okayama South Office	1075-1, Kuban, Higashi-ku, Okayamashi, Okayama 704-8161	Tel: +81-86-948-9333
	Tsuyama Office	401, Uetsukikita, Shoocho, Katsuta-gun, Okayama 709-4331	Tel: +81-868-38-7430
	Hiroshima Office	3-2-1, Kusatsuko, Nishi-ku, Hiroshima-shi, Hiroshima 733-0832	Tel: +81-82-270-0950
Shikoku	Takamatsu Branch	5-5-1, Asahimachi, Takamatsu-shi, Kagawa 760-0065	Tel: +81-87-851-4334
	Sakaide Branch	4001-83, Yoshida, Utazucho, Ayauta-gun, Kagawa 769-0221	Tel: +81-877-46-2617
	Toyohama Branch	2525, Minourako, Toyohamacho, Kanonji-shi, Kagawa 769-1604	Tel: +81-875-52-5457
	Matsuyama Branch	74-9, Minaminoda, Toon-shi, Ehime 791-0214	Tel: +81-89-955-5333
	Kawauchi Office	2195-1, Minamigata, Toon-shi, Ehime 791-0301	Tel: +81-89-955-8151
	Seiyo Office	328-1, Ino, Uwacho, Seiyo-shi, Ehime 797-0013	Tel: +81-894-62-6661
	West Toyo Office	928-2, Imazaike, Saijyo-shi, Ehime 799-1362	Tel: +81-898-65-6172
	Toyo Custom Clearance Office	928-2, Imazaike, Saijyo-shi, Ehime 799-1362	Tel: +81-898-65-4644
	Kochi Office	98-1, Soyama, Nankoku-shi, Kochi 783-0052	Tel: +81-88-862-1577
	Tokushima Branch	30-7, Ejiri aza kawanakasu, Kitajimacho, Itano-gun, Tokushima 771-0205	Tel: +81-88-698-9550
	Ishii Office	838-1, Takagawara aza takagawara, Ishiicho, Myozai-gun, Tokushima 779-3223	Tel: +81-88-674-4051
Kyusyu	Fukuoka South Office	10-1, Akinari, Tanushimarumachi, Kurume-shi, Fukuoka 839-1203	Tel: +81-943-73-7501
East Japan Car Dispatch Center			Tel: +81-4-2941-3097
31, Kamegaya, Tokorozawa-shi, Saitama 359-0014			

■ Katolec Group Logistics Locations (OVERSEAS)

KATOLEC GLOBAL LOGISTICS (THAILAND) CO.,LTD.

Amata City Chonburi I.E.,700/1056 Moo 9,T.Mabpong,A.Phanthong, Chonburi Province,20160, THAILAND
Amata City Rayong Industrial Estate Mabyangporn, Pluakdaeng, Rayong, 21140, THAILAND

GLOBAL LOGISTICS VIETNAM Co.,Ltd.

Lot CN07, Dong Van III Supporting Industrial Zone, Dong Van Ward, Duy Tien Town, Ha Nam Province, VIETNAM

KATOLEC(HK) Co., Ltd.

香港新界葵涌大連排道58-66號 樂聲工業中心13樓 B室

Unit B, 13/F, Roxy Industrial Centre, 58-66 Tai Lin Pai Road, Kwai Chung, New Territories, HONG KONG

■ Katolec Group Electronics Locations (JAPAN)

Global EMS Center	5-532-28, Asahimachi, Takamatsu-shi, Kagawa 760-0065	Tel: +81-87-826-8231
Global EMS Center Second Office	2F Takamatsu building A, 2-2-22 Asahimachi Takamatsu-shi, Kagawa 760-0065	Tel: +81-87-805-0095
Global EMS Center Osaka Office	Facade Esaka Bldg. 10F, 1-23-43 Esaka, Suita-shi, Osaka 564-0063	Tel: +81-6-6378-7110
Global EMS Center Tottori Development Office	7-5-1 Wakabadai-minami, Tottori-shi, Tottori, 689-1112	Tel:+81-857-38-6366
Takamatsu Plant	5-532-28, Asahimachi, Takamatsu-shi, Kagawa 760-0065	Tel: +81-87-811-0120
Matsuyama Plant	7-15-6, Kukodori, Matsuyama-shi, Ehime 791-0054	Tel: +81-89-973-9890
West Tokushima Plant(Office)	30-7, Ejiri Kawanakasu, Kitajimacho, Itano-gun, Tokushima 771-0205	Tel: +81-88-699-3018
West Tokushima Plant(Plant)	139-32, Toyohisa, Matsushigecho, Itano-gun, Tokushima 771-0213	

■ Katolec Group Electronics Locations (OVERSEAS)

P.T. KATOLEC INDONESIA

Ejip Industrial Park Plot 8F, Cikarang Selatan Bekasi 17550, Jawa Barat, INDONESIA

KATOLEC PHILIPPINES CORPORATION

103 East Main Avenue, Special Export Processing Zone, Laguna Technopark, Binan, Laguna, PHILIPPINES

KATOLEC (THAILAND) Co.,LTD

Nakhon Luang Industrial Estate 115/5 Moo 4, T.Bangprakroo, A.Nakhon Luang, Ayutthaya, THAILAND

KATOLEC(HK) Co.,LTD

Unit B and C, 13/F, Roxy Industrial Centre, 58-66 Tai Lin Pai Road, Kwai Chung, New Territories, HONG KONG

KATOLEC SUZHOU Co.,LTD

Bldg., D, No.58, Yang Dong Road, Suzhou Industrial Park, Suzhou, CHINA

KATOLEC AUTOMOTIVE SYSTEMS (GUANGZHOU) Co., Ltd.

3 Xingda Road, Huangpu, Guangzhou, Guangdong, CHINA

KATOLEC VIETNAM CORPORATION

Lot 41A-B, Quang Minh Industrial Zone, Me Linh District, Hanoi, VIETNAM

KATOLEC MALAYSIA SDN.BHD.

150-C, Jalan Kampung Jawa, Bayan Lepas Free Industrial Zone Phase III, Bayan Lepas, Penang, MALAYSIA

KATOLEC DEVELOPMENT INC.

6120 Business Center Ct, Suite F200, San Diego,CA 92154, USA

KATOLEC DE BAJA CALIFORNIA, S.A. DE C.V.

Boulevard Insurgentes #19208-5 Colonia Cerro Colorado, C.P.22223 Tijuana, Baja California, MEXICO

KATOLEC DE GUANAJUATO, S.A. DE C.V.

Avenida Miguel Hidalgo 100, Parque Industrial Marabis Abasolo, Abasolo, Guanajuato 36987, MEXICO

UNO MINDA KATOLEC ELECTRONICS SERVICES Pvt. Ltd.

Gat.No.427/5 & 427/10 ,Chakan-Talegaon Road, Village.Mahalunge,Tal.Khed, Dist.Pune-410501, Maharashtra, INDIA