

WiiPA Wireless Positioning Inspection System

WiiPA is Tecnatom's inspection platform that tracks the probe position in real time using infra-red cameras

...now available: live C-scan projection on the part itself with augmented reality glasses



sndt.tecnatom.es



Non Destructive Testing Technologies

WiiPA[®]

Wireless Positioning Inspection System

Your best technological partner

sndt.tecnatom.es

System Characteristics

- Manual inspection with traceable C-scan register
- Accurate probe position tracking by IR cameras
- Absolute freedom of probe movement
- Works as a "paintbrush process"
- Re-inspection of uncovered spots on the go
- Powerful Tecnatom SONIA UT electronics
- Full functionality of InspectView UT software, including 3D views
- Ideal for Phased Array UT

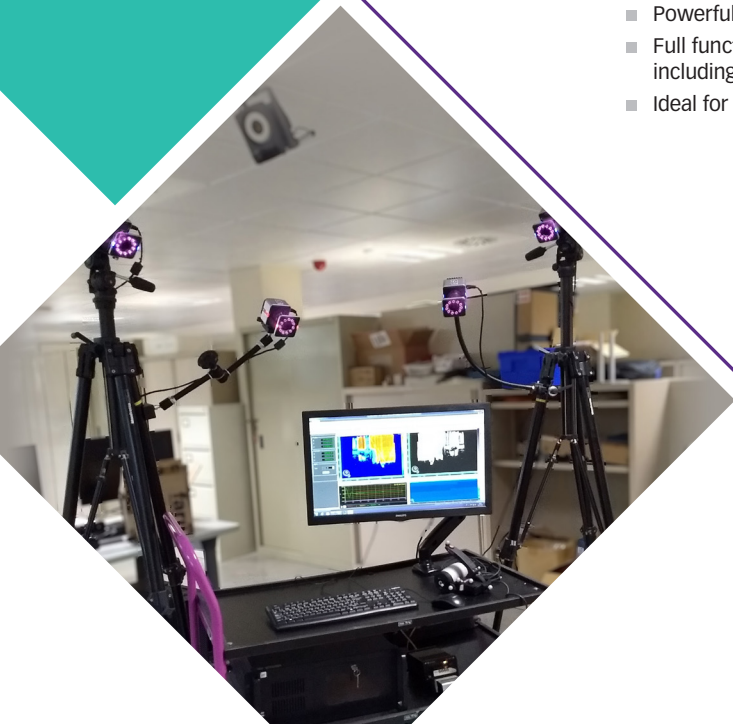


Photo courtesy of Aernova



Photo courtesy of Innerspec

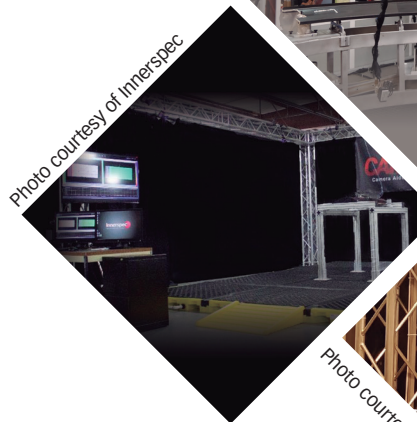
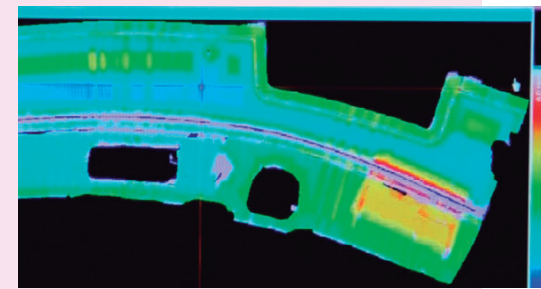


Photo courtesy of Turkish Aerospace Industries



Photo courtesy of Corse Composites



Proven Advantages

- Wireless probe motion tracking
- Real-time visualization of C-scan through augmented reality or on Display Screen
- Adaptable to any dimension and geometry
- Fast and easy set-up
- High repeatability and accuracy
- Suitable for various NDT methods
- Possibility of parallel working stations inside one WiiPA cell
- Available as Portable system (using a trolley or tripods) or Permanent installation (installing the cameras in a metallic structure)

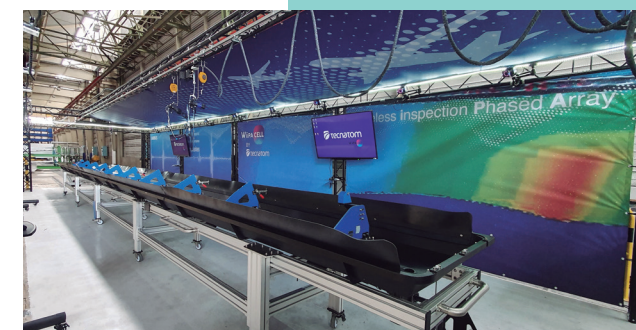


Photo courtesy of Airbus