

Standard Type



Quick Type



RoHS Compliant

ERON®

No.E-9659C

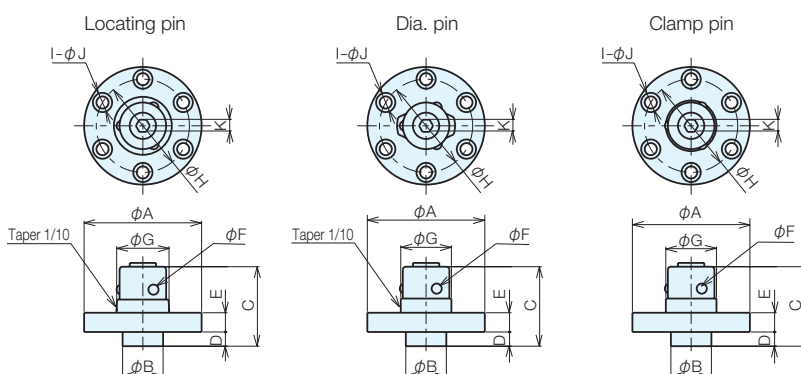
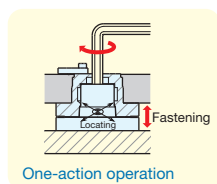
Q-Lock Elements/Pins (Screw Type)

Material Main body: SCM440 Steel balls: SUJ2

Heat Treatment Main body: HRC55 heat treatment
Steel balls: HRC62 heat treatment

Types and External Dimensions

Standard Type/Quick Type



Pin (Standard Type) Specifications

Type	Order No.	No.	A	B ^{-0.003 -0.013}	C	D	E ± 0.005	F	G	H	I	J	K	Weight (g)
Locating pin	966261	QLT19RP	45	15	31.3	6	7	4	19	36	4	4.5	5	110
	966262	QLT26RP	58	20	39.2	7	10	5	26	46	4	6	6	260
	966263	QLT32RP	72	25	49	8.5	12	6	32	58	4	7	8	500
	967647	QLT40RP	88	28	59	9.5	15	7	40	72	6	7	10	950
Dia. pin	966258	QLT19DP	45	15	31.3	6	7	4	19	36	4	4.5	5	110
	966259	QLT26DP	58	20	39.2	7	10	5	26	46	4	6	6	260
	966260	QLT32DP	72	25	49	8.5	12	6	32	58	4	7	8	500
	967648	QLT40DP	88	28	59	9.5	15	7	40	72	6	7	10	950
Clamp pin	966255	QLT19CP	45	15	31.3	6	7	4	17.8	36	4	4.5	5	110
	966256	QLT26CP	58	20	39.2	7	10	5	25	46	4	6	6	260
	966257	QLT32CP	72	25	49	8.5	12	6	30	58	4	7	8	500
	967649	QLT40CP	88	28	59	9.5	15	7	37	72	6	7	10	950

Pin (Quick Type) Specifications

Type	Order No.	No.	A	B ^{-0.003 -0.013}	C	D	E ± 0.005	F	G	H	I	J	K	Weight (g)
Locating pin	991492	QLTF19RP	45	15	31.3	6	7	4	19	36	4	4.5	5	110
	991493	QLTF26RP	58	20	39.2	7	10	5	26	46	4	6	6	260
	991494	QLTF32RP	72	25	49	8.5	12.5	6	32	58	4	7	8	500
	991495	QLTF40RP	88	28	59	9.5	15	7	40	72	6	7	10	950
Dia. pin	991496	QLTF19DP	45	15	31.3	6	7	4	19	36	4	4.5	5	110
	991497	QLTF26DP	58	20	39.2	7	10	5	26	46	4	6	6	260
	991498	QLTF32DP	72	25	49	8.5	12.5	6	32	58	4	7	8	500
	991499	QLTF40DP	88	28	59	9.5	15	7	40	72	6	7	10	950
Clamp pin	991500	QLTF19CP	45	15	31.3	6	7	4	17.8	36	4	4.5	5	110
	991501	QLTF26CP	58	20	39.2	7	10	5	25	46	4	6	6	260
	991502	QLTF32CP	72	25	49	8.5	12.5	6	30	58	4	7	8	500
	991503	QLTF40CP	88	28	59	9.5	15	7	37	72	6	7	10	950

Jig Set-up Systems
(Q-lock)

Base Elements

Clamp Units

Clamping Parts

Mechanical Parts

Machine Vises

Surface Plates and
Measurement Instruments

Index

Clutch Type



RoHS Compliant

ERON®

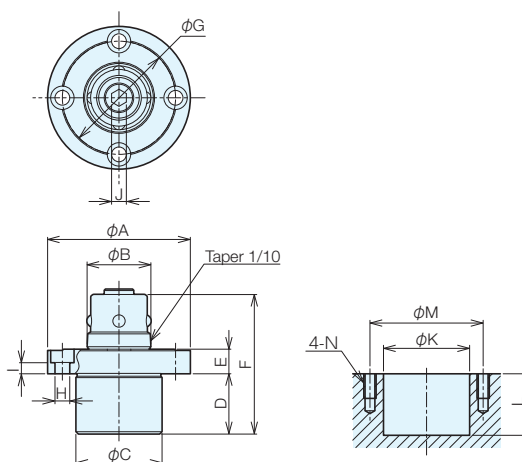
No.E-9659C

Q-Lock Elements/Pins (Clutch Type)

Material Main body: SCM440 Steel balls: SUJ2

Heat Treatment Main body: HRC55 heat treatment
Steel balls: HRC62 heat treatment

Clutch Type

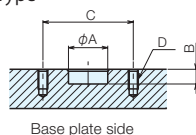


Pin (Clutch Type) Specifications

Type	Order No.	No.	A	B	C ^{-0.005 -0.016}	D	E ^{±0.005}	F	G	H	I	J	Weight (g)
Locating pin	109775	QLTC26RP	58	26	36	24.5	10	56.7	46	6	4.5	6	400
Dia. pin	109776	QLTC26DP	58	26	36	24.5	10	56.7	46	6	4.5	6	400
Clamp pin	109777	QLTC26CP	58	24	36	24.5	10	56.7	46	6	4.5	6	400

■ Mounting Dimensions

Standard Type/Quick Type/Side
Operation Type
Clutch Type



Base plate side

No.	A	B	C	D
QLT(F)19	15 ^{+0.011 0}	6.5	36	4-M4 depth 8
QLT(F)26	20 ^{+0.013 0}	7.5	46	4-M5 depth 10
QLT(F)32	25 ^{+0.013 0}	9	58	4-M6 depth 12
QLT(F)40	28 ^{+0.013 0}	10	72	6-M6 depth 12
QLTS26	36 ^{+0.016 0}	12.5	58	4-M5 depth 10
QLTS40	58 ^{+0.019 0}	15	86	6-M6 depth 12
QLTC26	36 ^{+0.016 0}	25	46	4-M5 depth 10

Base Elements

Clamp Units

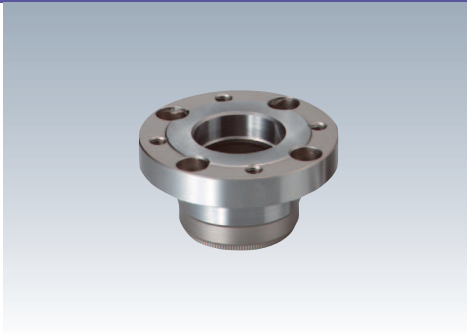
Clamping Parts

Mechanical Parts

Machine Vises

Surface Plates and
Measurement Instruments

Index



RoHS Compliant

ERON®

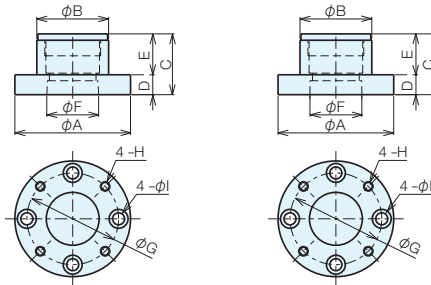
No.E-9659C

Q-Lock Elements/Bushes (Screw Type)

Material Main body: SCM440**Heat Treatment** Main body: HRC55 heat treatment**Accessories** Chip cover

Types and External Dimensions

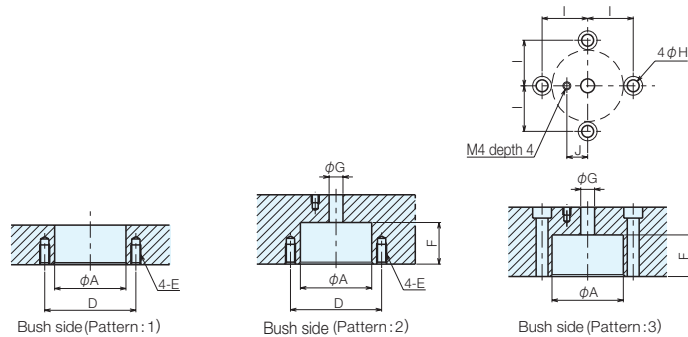
Locate bush Clamp bush



Bush Specifications

Type	Order No.	No.	A	B ⁰ _{-0.016}	C	D ± 0.005	E	F	G	H	I	Weight (g)
Locate Bush	966264	QLT19RB	45	27	24.5	7	17.5	19	36	M4 × 0.7	4.5	110
	966265	QLT26RB	58	36	30.5	10	20.5	26	46	M5 × 0.8	6	250
	966266	QLT32RB	72	45	37.5	12	25.5	32	58	M6 × 1.0	7	470
	967650	QLT40RB	88	58	46.5	15	31.5	40	72	M6 × 1.0	7	1000
Clamping Bush	966252	QLT19CB	45	27	24.5	7	17.5	18.5	36	M4 × 0.7	4.5	110
	966253	QLT26CB	58	36	30.5	10	20.5	25.5	46	M5 × 0.8	6	250
	966254	QLT32CB	72	45	37.5	12	25.5	31.5	58	M6 × 1.0	7	470
	967651	QLT40CB	88	58	46.5	15	31.5	39.5	72	M6 × 1.0	7	1000

Mounting Dimensions

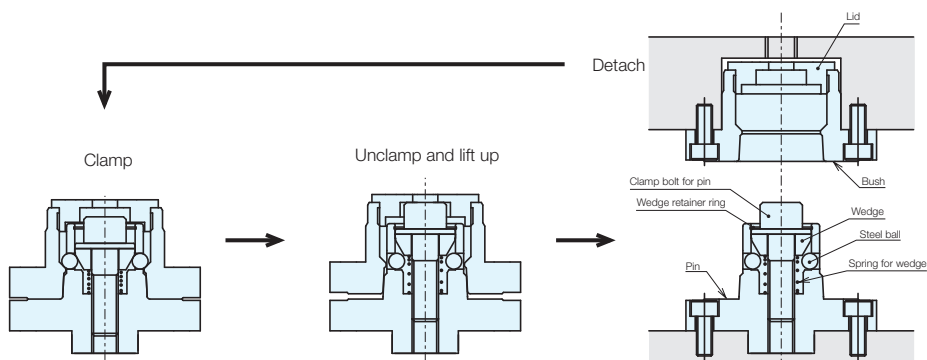


No.	A	Tolerance of A	E	F	G	H	I	J
QLT19	27	+0.033 +0.020	M4 depth 8	18.5	6.2	4.5	18	7.8
QLT26	36	+0.041 +0.025	M5 depth 10	21.5	7.3	6.0	23	10.5
QLT32	45	+0.041 +0.025	M6 depth 12	26.5	9.7	7.0	29	13.0
QLT40	58	+0.049 +0.030	M6 depth 12	32.5	12.0	7.0	36	13.0

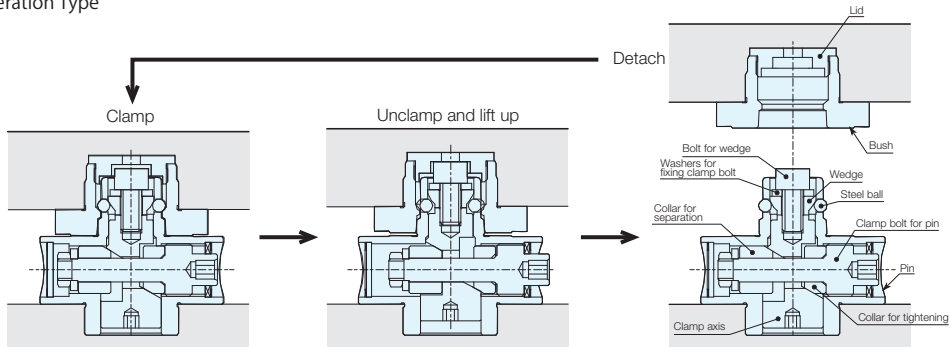
* The pitch tolerance of ϕA is within ± 0.01 . (If ± 0.01 is exceeded, add an adjusting allowance by making the dimension of ϕA larger to match the pitch dimension.)

■ Section Drawing

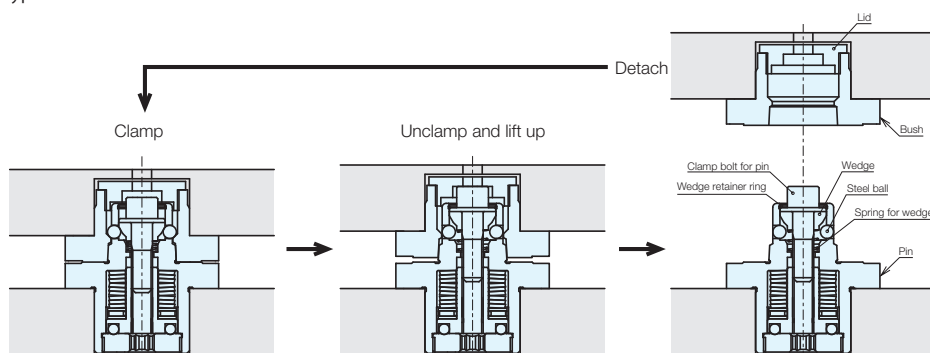
Standard Type/Quick Type



Side Operation Type



Clutch Type

Jig Set-up Systems
(Q-lock)

Base Elements

Clamp Units

Clamping Parts

Mechanical Parts

Machine Vises

Surface Plates and
Measurement Instruments

Index



RoHS Compliant

NEW

ERON®

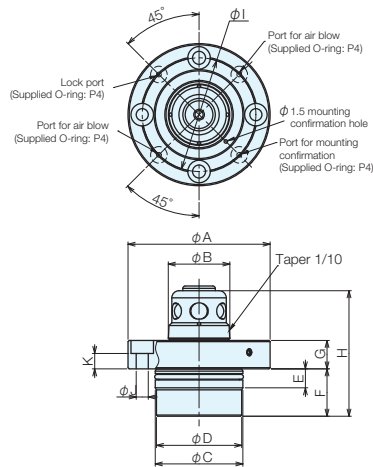
No.E-9659C

Q-Lock Elements Pins

(Pneumatic Type Double Action)

Material Main body: SU S440C**Heat Treatment** Main body: HRC55 heat treatment

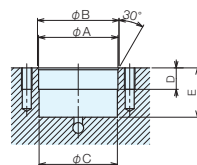
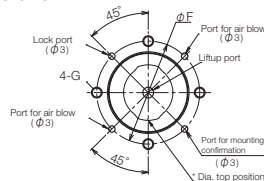
- Double acting (clamping using air)
- With air blow and mounting confirmation
- Vertical MC for light cutting
- Air is used for clamping and unclamping.
- Automatic replacement of jigs is supported by changing the valve.
- A system can be built easily by using the air pipes within a factory.



Specifications and Prices

Type	Order No.	No.	A	B	C h5	D	E	F	G ± 0.005	H	I	J	K	Weight (kg)
Locating Pin	125739	QLA19DRP	54	19	33	32	8	16.5	10	42.5	44	4.5	5.5	0.23
	125748	QLA26DRP	60	26	37	36	8	20	12	53	48	5.5	6.6	0.3
	125757	QLA32DRP	72	32	46	45	8	26.5	14	65.5	58	7	7.5	0.63
Dia. Pin	125740	QLA19DDP	54	19	33	32	8	16.5	10	42.5	44	4.5	5.5	0.23
	125749	QLA26DDP	60	26	37	36	8	20	12	53	48	5.5	6.6	0.3
	125758	QLA32DDP	72	32	46	45	8	26.5	14	65.5	58	7	7.5	0.63
Clamp Pin	125741	QLA19DCP	54	17.8	33	32	8	16.5	10	42.5	44	4.5	5.5	0.23
	125750	QLA26DCP	60	24	37	36	8	20	12	53	48	5.5	6.6	0.3
	125759	QLA32DCP	72	30	46	45	8	26.5	14	65.5	58	7	7.5	0.63

Mounting Dimensions



Use either one of the air blow ports
1 shown in the diagram.

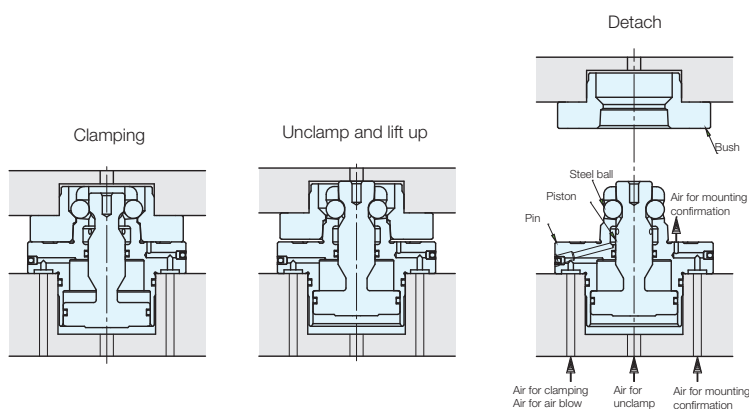
No.	A H7	B	C	D	E+0.30	F	G
QLA19D	33	34	32.5	10	19.5	44	M4
QLA26D	37	38	36.5	10	23	48	M5
QLA32D	46	47	45.5	10	29.5	58	M6

* The relationship between the dia. pin top position and the tap hole is as shown in the diagram. Machine the tap holes and port holes according to the direction of the dia. pin.

■ Specifications

Drive Method	Clamping	Pneumatic		
	Unclamping	Pneumatic		
No.		QLA19 D	QLA26 D	QLA32 D
Clamping Force (kN) (at 0.5 MPa)		1	1.5	2.4
Liftup Force (kN) (at 0.5 MPa)		0.28	0.36	0.62
Clamp Stroke (mm)		4	4.5	5
Amount of Lift Up (mm)		1		
Cylinder Volume (cm ³)	Clamp Side	2.6	3.65	6.2
	Unclamp Side	2.7	3.85	6.76
Maximum Usage Pressure (MPa)		1		
Minimum Usage Pressure (MPa)		0.4		
Guaranteed Withstand Pressure (MPa)		1.5		
Recommended Air Blow Pressure (MPa)		0.5		
Used Fluid		Dry Air		
Ambient Operating Temperature (°C)		0-65		
Weight (kg)		0.23	0.3	0.63

■ Section Drawing



Jig Set-up Systems
(Q-lock)

Base Elements

Clamp Units

Clamping Parts

Mechanical Parts

Machine Vises

Surface Plates and
Measurement Instruments

Index



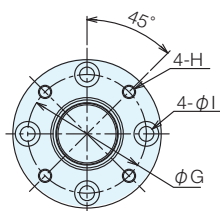
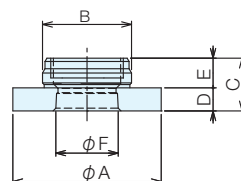
RoHS Compliant

NEW

ERON®

No.E-9659C

Q-Lock Elements Bushes (Pneumatic Type)

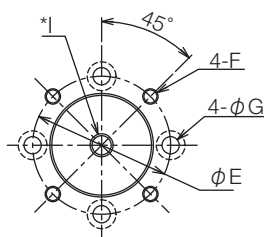
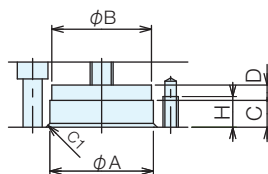
Material Main body: SCM440**Heat Treatment** Main body: HRC55 heat treatment

Specifications and Prices

Type	Order No.	No.	A	B -0.016	C	D ± 0.005	E	F	G	H	I	Weight (kg)
Locate Bush	125745	QLA19RB	45	27	16	7	9	19	36	M4	4.5	0.1
	125754	QLA26RB	58	36	21	10	11	26	46	M5	5.5	0.17
	125764	QLA32RB	72	45	25	12	13	32	58	M6	6.5	0.33
Clamp Bush	125746	QLA19CB	45	27	16	7	9	18.5	36	M4	4.5	0.1
	125755	QLA26CB	58	36	21	10	11	25.5	46	M5	5.5	0.17
	125765	QLA32CB	72	45	25	12	13	31.5	58	M6	6.5	0.33

* For locating pins and dia. pins, use a Locate Bush and for clamp pins, use a Clamp Bush.

Mounting Dimensions



No.	A F6	B	C	D	E	F	G	H	I
QLA19	27	26	6	4	36	M4	4.5	8	M6
QLA26	36	35	9	3	46	M5	5.5	10	M6
QLA32	45	44	11	3	58	M6	6.5	12	M10

* For I, use a plug as a lid. If you cannot release from the clamp due to an air-related problem, dismantle by using this hole.