



ADVANCED MANUFACTURING FACILITY OVERVIEW

FIDELITY MACHINE & MOULD - A DIVISION OF FIDELITY MANUFACTURING GROUP





MEET FIDELITY

ONE OF THE MOST ADVANCED MACHINE SHOPS IN WESTERN CANADA.

Our comprehensive facility, advanced project planning, and quality assurance program allow us to offer the highest grade machine solutions in the industry.



AREAS OF EXPERTISE

- Complex & High Precision Components
- Advanced Project Planning & Management
- Design & Engineering
- Turn-Key Solutions

MACHINE SHOP CAPABILITIES

- CNC Machining
- EDM Machines
- Mould Making
- Advanced Metrology

INDUSTRIES WE SERVE

- Aerospace
- Military
- Medical
- Oil & Gas
- Clean Tech
- Automotive



ABOUT OUR TEAM

Fidelity has a large team with dedicated roles and project support staff who specialize in each area. With extensive experience and a focus on progressive thinking, our management team is ready to connect with you each step of the way.

WHY CHOOSE FIDELITY?

THE CAPABILITIES OF A LARGE MANUFACTURING COMPANY WITH THE AGILITY OF A SMALL MACHINE SHOP.

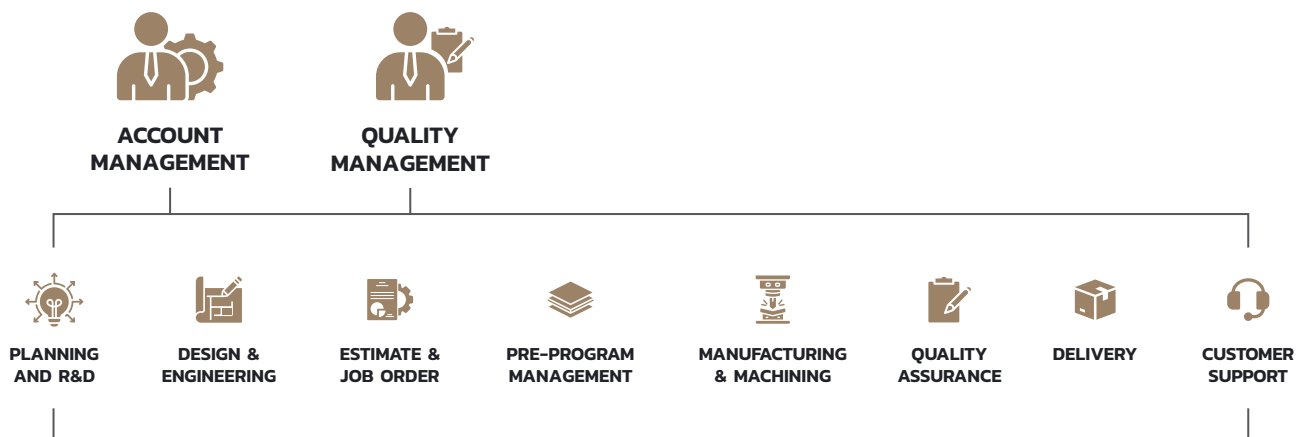
WHAT YOU CAN EXPECT:

- Clear and frequent communication
- End-to-end project management
- Flexibility and the ability to compress timelines
- Extensive capabilities and technical expertise
- Progressive thinking and innovative solutions



OUR PROCESS:

Our value goes much deeper than transforming raw materials into exceptional parts. We provide support and expertise through each stage of your project, and offer the flexibility needed to achieve the best results.



*This is general representation of the project process and may not represent the exact workflow of your project

OUR CAPABILITIES

WE SPECIALIZE IN THE MOST INTRICATE AND COMPLEX MACHINE PROJECTS.

Working with Fidelity is an experience you won't get anywhere else. We have the capabilities and know-how to complete the toughest, most intricate CNC machine projects efficiently and accurately. We never shy away from a challenge, and work closely with our customers to develop unique solutions for their machining needs.



PROJECT MANAGEMENT

We provide dedicated project managers to ensure consistent and effective communication on every project. Our team has the capacity to handle programs of any size, including long term deliveries or multi-year programs.

FACILITY

Our 55,000 sq ft facility houses over 40 machines spanning CNC Mills, Lathes, EDMs, Manual Machines, and Metrology and allows us to assist with any stage of the machining process.

ADAPTABILITY

Innovation and flexibility are central to our planning and machining process making Fidelity a manufacturing partner that is quick to adapt and address any project challenges.

MACHINE CAPABILITIES

CNC Machining

- 5 Axis and rotary CNC
- Complex 3D surfaces
- High-speed precision milling & turning
- Large diameter CNC turning capacity
- Machine Tool Probing

EDM

- Hole drill edm - 1/2 mm – 14"
- Wire edm - up to 16" thick
- Sink edm - almost limitless

Mould Making

- High performance injection moulds
- Custom cable overmoulds

Special Processes

- Vast qualified vendor network
- Coatings and other product enhancements



OUR APPROACH TO QUALITY

MACHINES AND QUALITY CONTROL PROCESSES THAT DELIVER UNPARALLELED RESULTS.

Quality is of the utmost importance at Fidelity, and is part of every stage of our project workflow. Our Quality Assurance team understands the importance of their role and the high standards our organization strives to meet. We leave no room for error or deviation, and take great pride in delivering with confidence.

Our certifications are just the baseline, we go above and beyond the basic requirements so you can be confident with the critical components you need. Fidelity utilizes state of the art equipment and follows comprehensive procedures to meet or exceed all our certification and customer requirements.

OUR QUALITY CONTROL PROCESS

1. Requirement Verification

- Verification of drawing details to create inspection plan for part/assembly
- Confirmation of AQL Inspection Requirements for production
- Verification of additional documentation required
- Carefully selected special process vendors comprise Fidelity's approved supplier list (ASL)
- Material requirement verification and testing

2. In Process Inspection

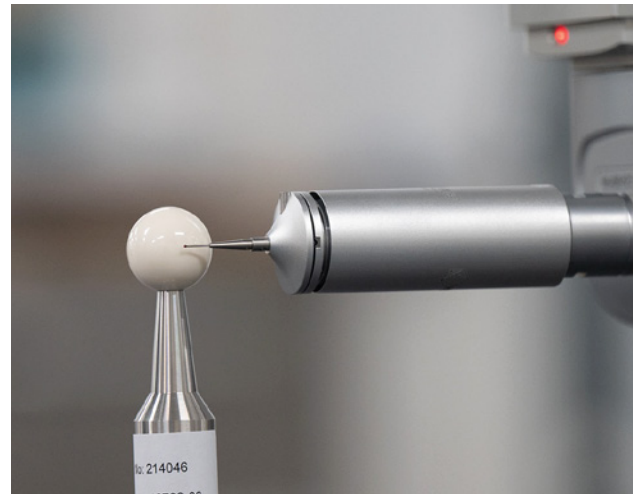
- In process quality control
- First piece / first article inspections as required
- Machine tool probing for efficient measurement during the machining process
- Multiple CMM machines for fast and accurate GD&T verification during the machining process
- Continuous feedback quality control monitoring
- Internal audits of company processes

3. Final Inspection

- Measurement accuracy to 1.7 microns on CMM machines
- Comprehensive inspection reports
- Facilitation of Source Inspections
- Strict attention to detail

4. Traceability

- Comprehensive traceability system from purchasing to final inspection
- High reliability (Hi-Rel) traceability practices (material & special processes)
- Complete QA document package to prove traceability and requirements are met
- Continuous vendor performance tracking



A MANUFACTURING TEAM YOU CAN RELY ON

Fidelity Machine and Mould is a division of Fidelity Manufacturing Group. As a group, we provide machining solutions to clients from a wide variety of sectors across North America for use all over the world. We go above and beyond to provide excellent customer service and ensure the experience of working with Fidelity is one you won't get anywhere else. This attitude, coupled with extensive experience and progressive thinking, makes Fidelity the number one choice for dedicated service and innovative solutions.

CONTACT

PHONE
(403) 724 0008

EMAIL
quoting@fidelitymachine.com

WEBSITE
fidelitymanufacturinggroup.com

HEAD OFFICE & MANUFACTURING FACILITY
6620 36 St SE
Calgary, AB, T2C 2G4
Canada

TRUSTED BY

AIRDYNE

ATTABOTICS

L3HARRIS™

Baker Hughes

**Raytheon
Technologies**

TELEDYNE

**plascon
plastics**

QUALICASE LTD

**QUANTUM
DOWNHOLE SYSTEMS**

**Repro
Scan**

MPowrx

**NOV
NATIONAL
OILWELL VARCO**

**New Leaf
Product
Development**

ORPYX

HALLIBURTON

CATHEDRAL

BIOCHECK

CanmetMATERIALS