

1. Company Profile

Company Name : DAIWA SEIKO CO.,LTD.  
Location : 2-2-27 Mizuhai, Higashiosaka City, Osaka  
Founding : April 1934  
Capital : 480 million JPY  
Number of Employees : 400 (April 2023)



Business Activities : Machining large casting for agricultural construction machinery.  
Manufacturing kitchen and labor saving equipment.  
: Machining and assembly for automobile engine and transmission.

Main Clients : AISIN CORPORATION, Aichi Machine Industry Co.,Ltd., Kawasaki Heavy Industries,Ltd.,  
Kubota Corporation, GLORY LTD., JATCO Ltd., MITSUBISHI HEAVY INDUSTRIES LTD.,  
MITSUBISHI MOTORS CORPORATION, Mitsubishi Electric Corporation

他生産拠点

Toyonaka Plant (Osaka Pref.)

Head office & HigashiOsaka Plant

Changzhou Plant (China)

DSPC Plant (Philippines)



Ibaraki Plant (Ibaraki Pref.)

Tsu Plant (Mie Pref.)

2. Six Strengths

Strenght 01 Production Plant	We are expanding globally not only in Japan but also in China and the Philippines, including procurement.
Strength 02 Design & Development	We have been involved in the design and development of products and assemblies for many industries over the years, so we have accumulated a variety of technologies and know-how, and we are able to propose optimal designs that meet the needs of our customers.
Strength 03 Industrial Technology	DAIWA's manufacturing is held in place through the planning and execution of processes, facilities and testing devices, and through the maintenance of machinery and facilities.And by building an in-house system, we make use of various energy monitoring systems,remote controls, and data analysis.
Strength 04 Processing Techniques	Sheet Metal/Welding : The CO <sup>2</sup> laser machine can process thin sheets up to 12mm thick. Cutting Machining : A large number of CNC machines with tool holders ranging from BT30 to BT50. Heat Treatment : Many years of experience and achievements in "Induction Hardening" and "Laser Hardening" for automobile parts.
Strength 05 Assembly & Painting	From the mass production of tens of thousands of units per month to low-volume production of dozens of units per month, we respond to a wide range of needs.
Strength 06 Quality Control	"The next process is the customer" as the basis for our flawless inspection system which makes use of control protocols, we perform in-house development and include specialized inspection machines, image processing, and laser equipment in the production line to satisfy product specifications.

3. Product introduction

○ Agricultural and construction machinery department

Unit assembly  
for Agricultural Machinery



<Tractor>



<Onion Picker>

Development and manufacturing  
for Kitchen Equipment



<Rice Robo.>



<Automatic Stir-Fry Cooker>

Newly developed product sales



Commercial sous vide cooker <Mitsuboshi-kun>



Plastic Glove  
Dispenser  
<Rakute>

○ Mobility/Precision Machining Department

Engine valve assembly for automobiles



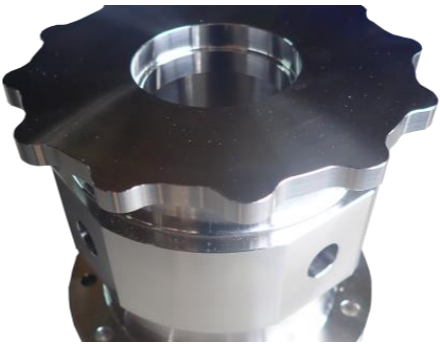
<Continuously variable valve unit>

Wire cut electrical discharge machining



<Precision machined products>

Fully machined products (difficult-to-cut materials,aluminum alloys)



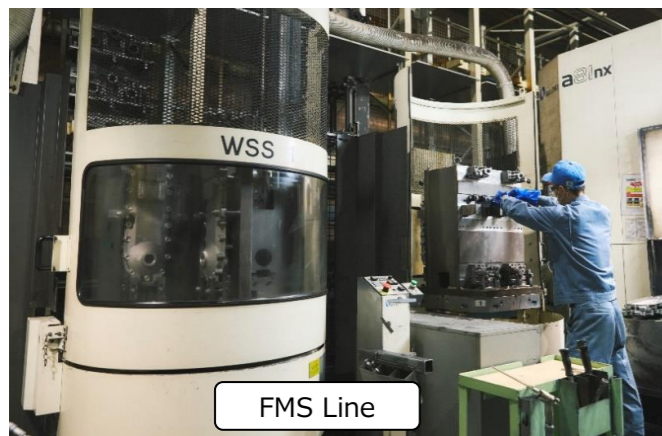
<Inconel>



<High silicon molybdenum cast iron>



<Aluminum alloy>



FMS Line



Fully automatic mass production line



In-house precision inspection equipment



Robot welding machine



Laser cutting machine



Wire cut electrical discharge machine

# ○Equipment list... Cutting machines,etc.

Equipment	Number of units	Main brands	Equipment	Number of units	Equipment	Number of units
BT50 MC	10	MAKINO J3	Induction hardening	10	Laser hardening machine	1
BT40 MC	25	Brother R450X1	Plasma welder	7	Welding robot	43
BT30 MC	129	Kira VTC-40 b	Spot welder	3	DC arc welder	18
HSK50 MC	10	MAKINO L2C5	Automatic electrostatic coating equipment	4	Wire cut electrical discharge machine	2
HSK63 MC	2	MAKINO a51 n X	Brake press 50T	3	Power press	4
HSK100 MC	2	MAKINO a81 n X	Pneumatic press machine	2	NC Bending machine	1
5 Axis control MC	1	MAKINO D500	Bending machine	7	Laser cutting machine	1
Composite NC lathe	7	Nakamura-tome seimitsu	Drilling machine,etc.	168		

# COMPANY PROFILE

Please scan this QR code  
for details



Based on our "one-stop shop" motto,  
we are committed to contributing to  
society through integrated manufacturing.

DAIWA SEIKO CO.,LTD.