



ELECTRONICS DIVISION

# ATOS

AIRBORNE TACTICAL OBSERVATION  
AND SURVEILLANCE SYSTEM

 **LEONARDO**

We apply our expertise in mission management and our cutting-edge sensor technology to deliver high performance, integrated solutions for ISR missions. We work in close cooperation with our customers to design solutions tailored on operational needs and ensure mission success.

ATOS is an advanced Airborne Mission System that integrates and manages various sensors and subsystems in order to perform ISR missions.

The System adopts a Human Machine Interface improving the User Experience and reducing operator workload. With more than 60 operative systems around the world, ATOS has been enhanced over the years to meet new requirements and needs of many international customers.

The Suite of mission sensors and other mission equipment can be tailored to meet the specific operational needs of each end-user and can include Leonardo, third parties or GFE mission sensors and equipment.

## ATOS MISSION MANAGEMENT SYSTEM

### MAIN FEATURES

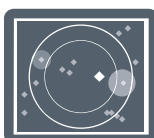
- Real time collection and handling of mission sensors data
- Maximum level of tactical situation awareness through the integration of navigation, geographical and mission sensor data
- Mission sensors control
- Automatic aiming of electro optical sensors
- Flight plan management
- Mission data recording and capability to store in a digital format high quality video
- Mission data base management and data fusion
- Mission briefing and reporting
- Ground Control Station for mission planning/ following/debrief, simulation and training
- Interoperability with NATO and national assets through STANAG implementation
- Redundant configuration at hardware and software level
- Cyber security compliant
- Customisable configuration including ITAR-FREE solution







MORE THAN 60 OPERATIVE  
SYSTEMS WORLDWIDE



MAXIMUM LEVEL OF TACTICAL  
SITUATION AWARENESS



## ATOS FOR ROTARY WING PLATFORMS

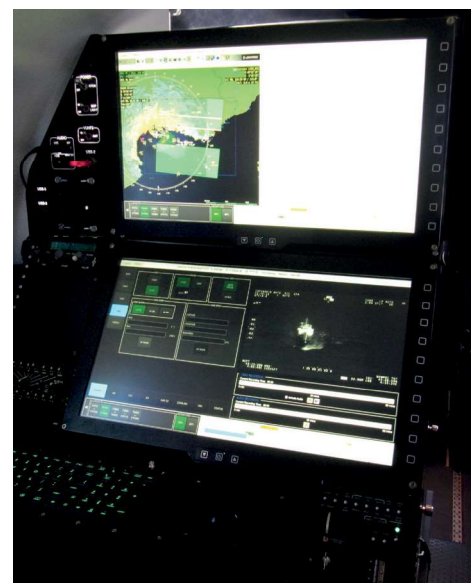
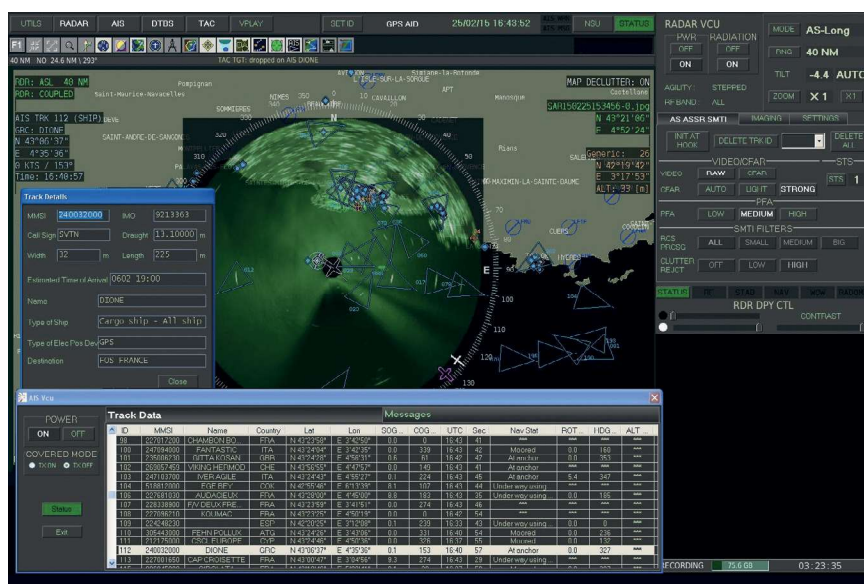
### SYSTEM FUNCTIONALITY

- Coastal and land surveillance
- Day/night reconnaissance
- SAR support and naval traffic control

### SYSTEM CONFIGURATION

- Mission Management System with one multifunction operator console
- Nose or belly mounted multimode surveillance radar
- Electro-optical/infrared HD turret
- Automatic Identification System (AIS)
- SAR Direction Finder (DF)
- SATCOM communication (option)
- V/UHF radios (option)





## ATOS FOR SHORT AND MEDIUM RANGE AIRCRAFT

### SYSTEM FUNCTIONALITY

- Maritime Patrol
- Land Surveillance
- Day/night reconnaissance
- SAR Support and naval traffic control
- Electronic/Communication Intelligence (option)

## SYSTEM CONFIGURATION

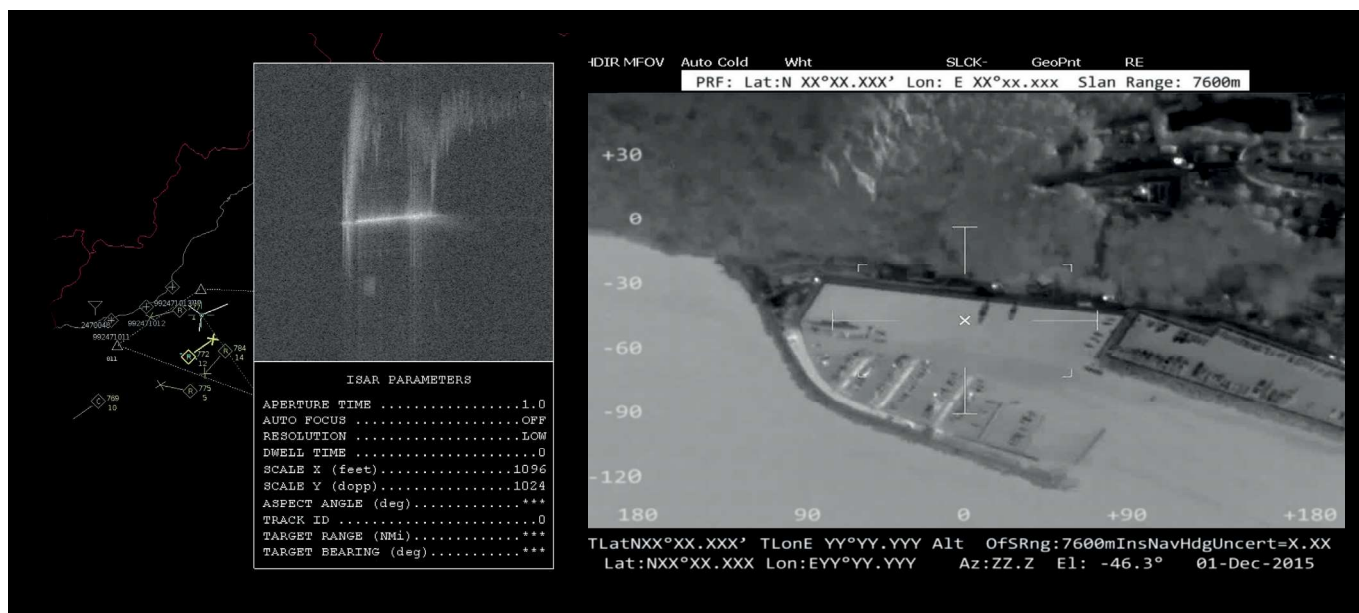
- Mission management system with one or two multifunction operator consoles
- Belly mounted 360° multimode surveillance radar
- Electro-optical/infrared HD turret
- Automatic Identification System (AIS)
- SAR Direction Finder (DF)
- ELINT/COMINT systems (option)
- SATCOM communication (option)
- V/UHF radios (option)



## ATOS FOR LONG RANGE AIRCRAFT

### SYSTEM FUNCTIONALITY

- Long range surveillance and reconnaissance
- Exclusive Economic Zone (EEZ) patrol
- Search & Rescue Support and Naval Traffic Control
- C4ISR and network-centric warfare
- Electronic surveillance
- Anti-Submarine Warfare (ASW)





## SYSTEM CONFIGURATION

- Mission management system with four multifunction operator consoles
- Belly mounted 360° multimode surveillance radar
- IFF interrogator integrated with the radar
- Electro-optical/infrared HD turret
- Automatic Identification System (AIS)
- SAR Direction Finder (DF)
- Electronic Support Measures (ESM) / EElectronic INTelligence (ELINT) system
- Ku/Ka SATCOM communication
- HF and V/UHF radios
- Tactical data links
- Ground control station
- Sonics system
- Stores Management System
- Additional laptops on rest area for mission operations and crew coordination

**For more information:**

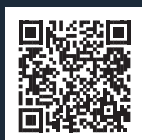
[airborneandspace@leonardo.com](mailto:airborneandspace@leonardo.com)

**Leonardo Electronics**

Strada Privata Aeroporto Caselle  
10077 San Maurizio Canavese (TO) - Italy  
T. +39 011 99671 - F. +39 011 9913357

This publication is issued to provide outline information only and is supplied without liability for errors or omissions. No part of it may be reproduced or used unless authorised in writing. We reserve the right to modify or revise all or part of this document without notice.

MM07800 01-19  
2022 © Leonardo S.p.A.



[leonardo.com](https://leonardo.com)

